



February 2026

## Fellowship Feast Coordinator

The Fellowship Feast at St. John's needs a new coordinator. The Feast is held usually the fourth Tuesday of February, May, August and November at 3 local churches (St. John's, Salem Lutheran and United Church of Christ in Sandwich.) The host church provides the main dish and salads. The other two churches bring hot casseroles and desserts.

The coordinators will plan the menu and shop, coordinate with other churches the date and what they will bring, work with St. John's staff re: Fellowship Hall set up, advertising flyers, place-mats etc., put out sign up sheets for prep day and serving day and make up the job lists for prep day and serving day. Connie Hamer and Karol Grandgeorge from the Stewardship committee have done the coordinating and have kept detailed notes and are willing to help the new coordinators. Please consider this position as the Feasts may come to an end without a coordinator.

# LWR Lutheran World Relief Work Days

February 10th

**9:00 am to 3:00 pm Bring a Lunch**

February 11th

**9:00am to 3:00 pm Bring a Lunch**

The Lutheran World Relief Work Days for 2026 have had some changes. We will now be meeting the second Tuesday and Wednesday of the month. This new schedule will help with the use of the Fellowship Hall. For the winter months especially we have taken out the Tuesday night work times. After a full day's work, going back in the cold has been tough! If this causes a problem for you, please let Karol or Connie know.

In February we will emphasize the Personal Care Kits for Lutheran World Relief. Each kit needs:

1 light weight bath size towel 52" by 27" in a dark color

1 adult size toothbrush in original packaging

1 metal nail clipper

Bar soap to equal at least 8 oz. in original packaging

1 sturdy comb (No picks)

When you purchase these items, they can be placed in the bin in the Welcome Center. If you would rather have us shop, please put your donation in an envelope and indicate the money is for Personal Care Kits.

## GOD'S WORK, OUR HANDS!

## St. John's Lutheran Church Council Minutes - January 11, 2025

Members present: Bob Fraley, Connie Hamer, Scott Horsch, Cindy Karp, Wayne Karp, Joanne Robinson

- ◆ Cindy led devotions
- ◆ Wayne called the meeting to order at 11:01
- ◆ Connie made a motion to accept the consent agenda. Joanne seconded. Motion carried.
- ◆ Scott presented the treasurer's report
  - ⇒ Checkbook balance at the end of the year \$136,902.56
  - ⇒ Actual revenue finished at 98.82% of proposed budget
- ◆ Committee reports
  - ⇒ Fellowship/Hospitality - None
  - ⇒ Outreach – None
  - ⇒ Finance – Audit committee members meet next week
  - ⇒ Missions/Stewardship – See report. Bob said he would mention to Lions Club the blood drive in June to help meet the 15-unit quota.
  - ⇒ MOG – The fund's total is \$582,101.64 with \$102,876.24 in the money market. Kathy Anderson is going off the committee so a replacement is needed.
  - ⇒ Parish Education – Everything going well.
  - ⇒ Property –
  - ⇒ Parsonage is painted
  - ⇒ Front door and screen door have been replaced.
  - ⇒ The bushes along the west side of the church building were trimmed.
  - ⇒ Worship – See report.
  - ⇒ Tech –
  - ⇒ The financial secretary's computer is working again.
  - ⇒ Bruce Mason advised the office to change out the toner and in time it will correct itself.
- ◆ Scott presented next year's budget. Cindy made a motion to accept the budget. Connie seconded. Budget was accepted.
- ◆ Annual meeting is January 25, 2026. Members are encouraged to attend to provide a quorum.
- ◆ Joanne made a motion to adjourn. Connie seconded. The meeting was adjourned at 11:39.

In God's service,

Robert Fraley

## STEWARDSHIP/MISSION MINUTES 1-7-25

The January Stewardship meeting was called to order at 8:50 a.m. with Michael Hamer, Karol Grandgeorge, and Connie Hamer present. We prayed asking for God's wisdom in making Stewardship decisions.

Two gift cards which came in after the LSSI Giving Tree presents were collected were mailed. The following is information if needed next year.

Kathy Hall (LSSI Giving Tree consultant) e-mail: [Kathy.Hall@lssi.org](mailto:Kathy.Hall@lssi.org)  
Mailing address: **LSSI – Advancement, PO Box 100, Nachusa, IL 61057**

Michael's December offering report was as follows: General Fund - \$15,096.92; Capital Fund - \$994.41; Safe Passage - \$620.93, and Kitchen - \$150.

Emphases for February are LWR Personal Care Kits and the Growing Hope Globally Gala. The same 5 articles are needed for the Personal Care Kits as previously: bath towel, soap, toothbrush, nail clippers, and sturdy comb. We will check to see how much money is currently in that fund. The GHG Gala is scheduled for Saturday, Feb. 21<sup>st</sup> with charcuterie service at 5:00 p.m. and dinner at 6:15 p.m. Reservations will be accepted until capacity is reached or until January 31<sup>st</sup>. LWR workdays have changed for 2026. We will now be working during the second week of each month and have **eliminated** the Tuesday night work sessions. Pamphlets with the year's dates are available in the kitchen hallway.

We have not been contacted about a follow-up meeting about last year's Fellowship Dinners. Karol will contact Marilyn Wouda for information.

The annual St. John's Blood Drive is scheduled for Thursday, June 4<sup>th</sup> from 2:00-6:00 p.m. Our liaison with Versiti is now Santiago Cuevas (847-372-9658), e-mail: [scuevas@versiti.org](mailto:scuevas@versiti.org). Mr. Cuevas had urged us to host 2 drives, but the committee decided one was all we could handle at this time. In addition, they are no longer accepting donations at other Versiti sites and crediting the St. John's drive. So, our donors must give at St. John's on the June 4<sup>th</sup> date.

We adjourned at 9:50 a.m. by praying The Lord's Prayer. Our next scheduled meeting is Wednesday, February 4<sup>th</sup> at 8:45 a.m.

## WORSHIP COMMITTEE MINUTES 12-3-25

Present were Toni Lundeen, Julie Horsch and Cindy Karp.

We began our meeting at 2:05pm. Hymns and organists are all scheduled for the month of February thanks to Julie.

Lenten season will be starting in about 6 weeks with Ash Wednesday on 2-18-26. I did check and we have plenty of ashes. Wayne is checking to see if an ordained Pastor must administer them. I spoke with Karol Grandgeorge about soup suppers before service during Lent. We will have a planning meeting on Tuesday, January 27th at 11:00am after Wendy's reading buddies. Julie is going to contact Cindy Lackey at the Congo Church and invite them to come again this year. Karol and Diane will take care of Palms for Palm Sunday and Lillies for Easter Sunday. We decided to do Holden Evening Prayer again this year.

Men's Lenten breakfasts will start on 2-21-26. We ended our meeting at 2:45 pm.

In God's service, Cindy Karp

## Rebekah Circle

Date: Thursday, February 19th

Time: 1:00 pm

Location: St. John's Fellowship Hall

Lesson: Travels With Jacob

Session #1

Hostess: Karol Grandgeorge

## *Growing Hope Globally Gala*

Saturday, February 21, 2026

St. John's Lutheran Church, 235 S Green Street, Somonauk, IL  
Social Hour with Charcuterie Service 5:00-6:00 pm

Formal Plated Dinner Service with live piano music at 6:15pm prepared by

*The Traveling Chef* \$150.00 per plate

More info in the Welcome Center



# FEBRUARY

## *birthdays*

**Reagan Hallman** 02/01  
**Don Rubis** 02/03  
**Renee Hallman** 02/05  
**Cindy Karp** 02/06  
**Meredith Stahl** 02/06  
**Amy Killely** 02/11  
**Susan White** 02/13  
**Emily Denault** 02/13  
**Drew Milligan** 02/16

**Olivia Rogers** 02/17  
**Toni Lundeen** 02/17  
**Tyler Stahl** 02/18  
**Lee Gehrke** 02/22  
**Destiny Eaton** 02/22  
**Elfriede Korallus** 02/25  
**Jessica Wold** 02/25  
**Cindy Jansen** 02/26



# FEBRUARY

## *anniversaries*

**Jim & Anita Beal** 02/26

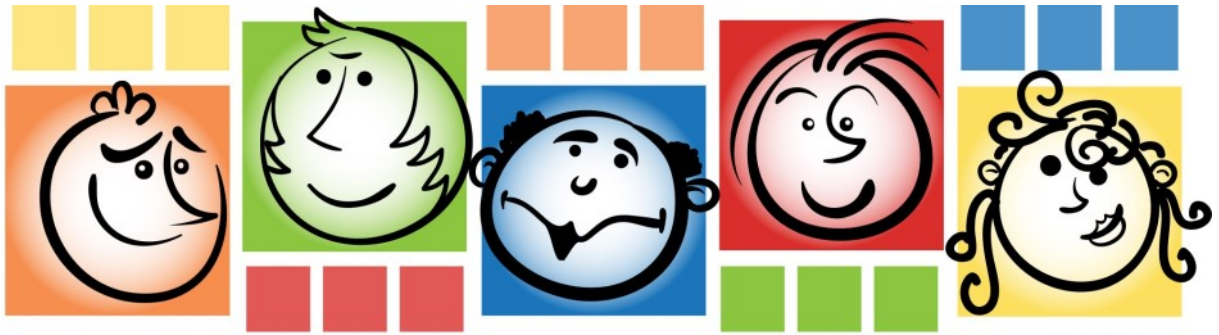


**Reading Buddies**  
 With Wendy Merkel's kindergarten class

**February 24th @  
 10:00am**

**Sign up in the  
 Welcome Center**





# MEETING



## **Stewardship Committee**

8:45am Wednesday, February 4



## **Worship Committee**

1:00pm Wednesday, February 4



## **Church Council**

10:00am Sunday, February 8



## **Property Committee**

10am Wednesday, February 4



## **Fellowship & Hospitality**

2:00pm Wednesday, February 4



## **Rebekah Circle Meeting**

6:00pm Thursday, February 19



Sunday	Monday	Tuesday	Wednesday	Thursday
1	2	3	4 8:45am Stewardship 10:00am Property Mtg. 1:00pm Worship Mtg. 2:00pm Fellowship & Hospitality  6:30pm Confirmation @ St. John's	5
8 8:30am Sunday School and Adult Forum 9:45am Worship	9	10  <i>LWR Workday 9:00am-3pm</i>	11  <i>LWR Workday 9am-3pm</i>  6:30pm Confirmation @ St. John's	12
15 8:30am Sunday School and Adult Forum 9:45am Worship  10:00am Church Council Meeting	16	17	18  <b>Ash Wednesday</b> Meal: 500-6:00pm Worship 6:30 pm	19
22 8:30am Sunday School and Adult Forum 9:45am Worship	23	24  10:00am Reading Buddies	25  6:30pm Confirmation @ St. John's	26



	Thursday	Friday	Saturday
	5	6	7  5:00pm Worship
	12	13	14  5:00pm Worship
	19  1:00pm Rebekah Circle	20	21 5:00pm Worship  Growing Hope Globally Gala Social Hour 5:00pm Dinner 6:15pm
	26	27	28 5:00pm Worship
			February 2026



# The Parents Corner

We have just ended the first quarter of the 21<sup>st</sup> century. During those 25 years, we have experienced a successful attack by terrorists on the twin towers in New York City, the Pentagon and a failed attempt on our capital and legislature building. We have had a pandemic, which not only killed people, but our response to it destroyed countless businesses.

We have had two short periods of a good and growing economy separated by two recessions. Both those recessions ended businesses and threw people out of work. The second one also brought rapid inflation and shelves empty of essential items. That's a lot of turmoil in such a short time.

People born in this century or shortly before do not know that things could be much worse. When my daughter completed college, there was a double-digit inflation, double digit interest rates and double-digit unemployment. She went far to find a job. And people who are not familiar with the New Testament of the Bible do not know Jesus as Savior and Guide for our lives during times of prosperity or upheaval.

Jesus was born with the purpose and power of God and the foibles and frailty of man. Mary and Joseph were chosen to guide him. What a household that must have been!

We have a glimpse of Jesus as God and man, when a child in Jerusalem with temple elders marveling at the wisdom of a child while Jesus marveled that his parents, did not know where he was for three days.

We see him as God and as man when he was irritated with his mother's request to use his power to perform a parlor trick at a wedding in Cana, water into wine indeed.

Jesus as God was approved and exalted at His Baptism. He then left to battle the devil's temptations to misuse His power.

His duality culminated in the Garden of Gethsemane. First, praying for his mission to be gone from him. Then, praying that He have the strength to not use His power to resist, but to submit.

We are each a "saint and sinner". Jesus experienced this. He leads us, guides us and loves us with no condemnation. Remember this when you teach your children.

Submitted by Lois Spizzirri

## **Church Staff**

### **A. Administration**

- i. Office Secretary: Julie Horsch

### **b. Business**

- i. Financial Recorder: Mike Hamer
- ii. Treasurer: Scott Horsch

### **c. Facilities**

- i. Building Superintendent: Diane Wold

### **d. Worship**

- i. Accompanists: Jessica Ortega, Toni Lundeen,  
Becky Stephens, Margaret Page

## **Church Council**

President: Wayne Karp  
Vice-President:  
Secretary: Bob Fraley

## **Congregation Council**

Mary Carlson  
Mike Hamer  
Connie Hamer  
Cindy Karp  
Joanne Robinson

## **Lutherdale Bible Camp Representatives-2026**

Karol Grandgeorge, Nancy Miller

## **Synod Assembly Representatives-2026**

Wayne & Cindy Karp

## **Cemetery Ministry Team**

Bob Fraley, Glen Reuter, Doug Stahl

## **Endowment Ministry Team**

Marion Gaffney, Mike Hamer, Ward Hearn, Wendy Merkel

## **Finance Ministry Team**

Chuck Hoepe,  
Bob Mueller, Joanne Robinson

## **Memorial and Other Gifts Fund Team**

Kathy Anderson, Connie Hamer, Linda Johnson, Adam Killey  
Jerry Lundeen, Nancy Miller, Anita Milligan

## **Church Ministries & Organizations Contacts**

Altar Guild

CROP Walk: Mark Lee & Mike Hamer

Growing Hope: Jerry & Toni Lundeen

Global Missions: *In need of leadership*

Habitat for Humanity: Karol Grandgeorge

Hearts & Hands:

LSSI Christmas Hope Chest: Karol Grandgeorge & Julie Horsch

LWR Projects (Mission Quilts, Baby Care Kits, School Kits,

Personal Care Kits, Sewing Kits): Karol Grandgeorge

Meals on Wheels: Mark Lee

Midwest Shelter for Homeless Veterans: *In need of leadership*

Our Sharing Pantry: Jerry Lundeen

Prayer Chain: Karol Grandgeorge

## **Parish Education**

### **Confirmation**

- a. Primary Instructor—Scott Horsch, Maury Killey
- b. St. John's Congregational Council

### **3N1: 7—12 gr. Youth Ministry:**

Coordinators:

Youth Ministry Connection from St. John's—Julie Horsch

**Esther Circle:** Jeanette Pfeifer

**Rebekah Circle:** Connie Hamer

**Sunday School Coordinator:** Nancy Miller

## **Chairpersons/Ministry Summaries**

*(Listed alphabetically by ministry)*

**Cemetery Ministry:** Bob Fraley

Oversees the care of the church cemetery, maintenance and improvements.

**Communications Ministry:** Bob Fraley

Seeks to improve communication with members and the community.

**Fellowship & Hospitality Ministry**

Plans activities and recreational outings to promote friendship and fellowship in our congregation and community.

**Finance Ministry:** Scott Horsch

Proposes the budget and administers incoming and outgoing funds.

**Outreach Ministry:**

Reach out to the community by welcoming new neighbors with bread, hosting/participating in community events, following up with visitors, and bringing God's love to St John's 'special members' from cradle roll through the homebound.

**Parish Education Ministry:**

Oversees Sunday School Program, Summer Bible Day Camp, and youth related activities.

**Property Ministry:**

Oversees the care of the church facilities and grounds, maintenance and improvements.

**Stewardship /Missions Ministry:**

Provides opportunities for members of our congregation to use their gifts and resources, which includes raising funds for special projects. Provides a variety of opportunities to do God's Work with Our Hands. Organizes activities, publicize events and coordinate participation. Please join us in any way that works for you.

**Worship Ministry:** Cindy Karp

Striving to provide Spirit filled worship opportunities in an atmosphere of hospitality.

# Newsletter of St. John's Lutheran Church February 2026

Evangelical Lutheran  
Church in America  
God's work. Our hands.



**We're on the Web:**  
[www.elcastjohns.org](http://www.elcastjohns.org)

235 South Green Street  
P.O. Box 245  
Somonauk, Illinois 60552

Church Office 815-498-3667  
[office@elcastjohns.org](mailto:office@elcastjohns.org)

*Follow and like us on Facebook*

*[www.facebook.com/stjohnslutheran  
churchsomonauk/](http://www.facebook.com/stjohnslutheranchurchsomonauk/)*