

St. John's

monthly

LUTHERAN CHURCH
NEWS
INFORMATION



NOVEMBER 2024



A Thanksgiving Message from your Pastor ...

"I give thanks to my God always for you because of the grace of God that has been given you in Christ Jesus..."
1 Corinthians 1:4 NRSV

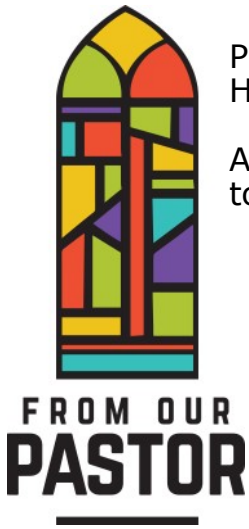
November is a time to count our blessings and give thanks to God for the bountiful harvest and for all the gifts God has given to us.

Worship, Sunday School, Confirmation, Bible Studies and the various Committees of this church continue to meet. The weekend of November 2nd & 3rd will be All Saints weekend – we will remember those who have left us and have joined the “great cloud of witnesses”. If you would like to add someone to the list of names we remember, please let Julie or me know by October 31st.

The Community Feasts continue in November. It will take place at United Church of Sandwich on Sunday, November 24th. The meal will be served from 4:30 – 6:00 pm. An Ecumenical Community Thanksgiving Service will follow at 6:00 pm. Please consider joining us as we give thanks to God for our bountiful blessings!

November 23rd & 24th is the end of the liturgical church year. It is Christ the King weekend.

The Church Offices will close on Wednesday November 27th at noon and will be closed on Thursday & Friday, November 28th & 29th for the Thanksgiving Holiday. After Thanksgiving, the Holiday Season begins with the 1st weekend in Advent. On Tuesday, December 3rd, I will begin Advent Morning



Prayer for 3 weeks in Advent at 9:00 a.m. in the Fellowship Hall.

As the holiday season begins, we remember to give thanks to God for all God's gifts.

What a joyful time to give God thanks and praise for all things!

Pastor Chris



LSSI GIVING TREE

We will be doing the LSSI Giving Tree again this year during the month of November. As in the past, we will hang paper ornaments on a tree in the Welcome Center. On the back of each ornament will be a person's name, age and desired gift. We ask that you go shopping for that gift and return it to the large box near the tree.

Please do not wrap the gift and be sure to securely attach the tag to the gift. All of the gifts must be returned by the **first weekend in December**. We are hoping to get a list of gift cards that are also needed and we will make

that list available on the tree. The gift cards can just be placed in a plain, white envelope and placed in the box. They will not have names on them. If you would like to help, but cannot shop, you may place a donation in a blue envelope and mark it LSSI Giving Tree. The money will be used to purchase some extra gift cards. Thanks in advance for your help. You may contact the office or Karol Grandgeorge at 815-370-0883 with questions.



THE
Giving Tree

LWR Lutheran World Relief Work Days

November 19th

**9:00 am to 3:00 pm and
7:00 pm to 9:00pm Bring a Lunch**

November 20th

9:00am to 3:00 pm Bring a Lunch

Thanks again to all who have donated to the shipping fund for Lutheran World Relief. The cost to send everything we make throughout the year is very high. This money is used to get the quilts and kits from the warehouses to the people in need. We know that quilts and kits were sent to people in the hurricane-stricken areas of the United States as well as to the war and natural disaster areas of the world.

November work days will be busy as we sort donations, cut quilt blocks and school backpacks, tie quilts, sew around quilts, assemble Baby Care Kits and enjoy fellowship. Remember when you are cleaning linen closets or dresser drawers, we take used sheets, mattress pads and blankets for use in quilts any time thorough out the year. There are always many jobs to be done. Please come spend a few minutes to help those less fortunate!

REMEMBER:

GOD'S WORK, OUR HANDS!

St. John's Lutheran Church Council Minutes - October 6, 2024

Members present: Bob Fraley, Connie Hamer, Mike Hamer, Scott Horsch, Cindy Karp, Wayne Karp, Pastor Chris Schoon

After devotions were led by Wayne, the meeting was called to order at 10:42

- ⇒ Mike made the motion to accept the consent agenda, Connie seconded, motion carried. Scott pointed out there were some outstanding checks.
- ⇒ Treasurer's report: Scott reported that the capital fund continues to grow. We are 67% of the way through the year and on track to meet our budget. Energy bills are always a large part of expenditures. Scott was asked about the synod budget only being at 44 percent and recommended we wait until the end of the year to decide on an extra contribution. We currently give 15 percent which is above many congregations.
- ⇒ There was discussion as to what line items alter guild supplies come from.
- ⇒ Connie noted custodial supplies are up.
- ⇒ Committee reports
 - ◇ Fellowship/Hospitality – None
 - ◇ Outreach – None
 - ◇ Finance – A proposed budget has been compiled. They will meet again on October 27th and will bring it to the council in November.
 - ◇ Missions/Stewardship – See report. Mike reported there have been no requests for giving envelopes for the upcoming year. It was suggested the upcoming community feast proceeds go toward hurricane relief.
 - ◇ MOG – See report. There is money available to purchase newer lightweight tables for the fellowship hall.
 - ◇ Parish Education – The teachers are receiving help from some of the older students. Sunday school will be participating in the Oct 13th service.
 - ◇ Property – Ward recommended having someone power wash the west side front façade.
 - ◇ Worship – None
 - ◇ Tech – Wayne mentioned the possible need to replace the laptop computer used for audio.
- ⇒ Pastor's report – See report. Advent morning prayer will be held on December 3, 10, and 17.

- ⇒ The council was asked and agreed to meeting on Sundays immediately after church.
- ⇒ Cindy made the motion to adjourn, Connie seconded, meeting was adjourned at 11:38.

In God's service,

Bob Fraley

News from St. John's Committees

STEWARDSHIP/MISSION MINUTES 10-2-24

The October meeting was called to order with the following present: Karol Grandgeorge; Mark Lee; Lynn Sczypiec, Mike Hamer, Connie Hamer, and Pastor Chris Schoon. The opening prayer was entitled "Relying on God's Wisdom."

The September minutes were approved as read.

Mike's Sept. offering report was as follows: General Fund - \$14,752.00; Capital Fund - \$1010.04; and Shipping Fund - \$610.97. Some have asked for an explanation of the Shipping Fund. These monies are for LWR kits to be shipped worldwide after they have reached New Windsor, MD. Delivering the kits to Elgin is done voluntarily by church members. Delivery from Elgin to the Maryland warehouse is covered by Church of The Brethren.

There was discussion as to what we can do to assist our country and people in recovering from the deadly hurricane, Helene. Pastor Chris will speak with the local Ministerial Association to see if we can combine our efforts.

A sincere thank you to all who are walking or have donated to CROP. We have raised \$1600 from St. John's so far. Walking begins at 2:00p.m.

at the Somonauk Park this Sunday (6th). Rosati's will be donating a portion of their sales to CROP on Wednesday, Oct. 9th. Pastor has coupons available.

Community Feast news: The first Comm. Feast is scheduled for Tuesday, Oct. 22nd from 4:30 – 6:00 at Salem Lutheran in Sandwich. The main meal will be a taco bar. We are responsible for providing salads. There will be a signup sheet for salads which should be at our church by 3:00 pm on the 22nd. We will then deliver them to Salem. The second Comm. Feast will be a bratwurst dinner on Sunday, November 24th hosted by the United Church of Sandwich followed by our Thanksgiving Ecumenical Service at 6:00. On Tuesday, February 25th, 2025 our church will be responsible for hosting the Comm. Feast and it will be our responsibility to provide the entrée, drinks, and paper products.

The **LAST** Growing Hope Globally Harvest Celebration is scheduled for Saturday, October 19th beginning at 10:30a.m. at the Sandwich Fairgrounds. Set-up will be at 9:00a.m. on the day before. We are still in need of 2 pies for the auction.

Time & Talent brochures were distributed and should be returned to the church office. Extra copies are available in the office.





Reading Buddies is back
in full swing with Mrs.
Merkel's kindergartners!





**Thanksgiving
Community Feast**

and

**Ecumenical Thanksgiving
Worship Service**

Sunday, November 24th
United Church of Sandwich

Feast

4:30 ~ 6:00pm

Service

6:00pm





The United Church of Sandwich is hosting this year's Ecumenical Thanksgiving Service on Sunday November 24, 2024. As a part of this service, they are gathering persons voices to help sing in celebration and Thanksgiving. Rehearsal will be at 5:15pm before the 6:00pm service. A sign-up sheet will be in the Welcome Center.



Thank you, thank you, thank you to everyone who made the final Growing Hope Globally Harvest Celebration a great success! We had beautiful weather, a well attended worship service, and a record breaking fundraising day!! Pies raised \$11,200 with the average pie bringing in over \$423. Total revenue for that day was \$20,523.91. Amazing....over \$20,000 for our 20th year! The money raised at the Harvest Celebration will be sent to GHG to support the program in Tanzania Arusha as determined by the voting that day. Well done, good and faithful servants! Jerry and Toni Lundeen



**GROWING
HOPE**
G L O B A L L Y



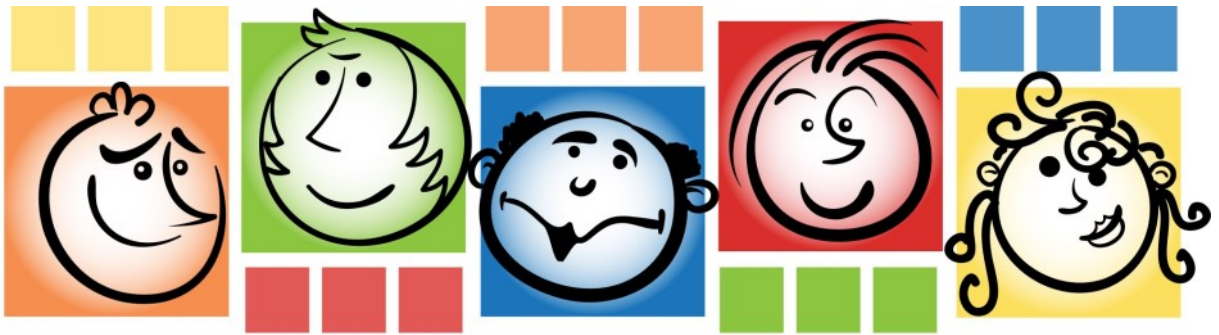
Rebekah Circle

Date: Thursday, November 21st

Time: 1:00 pm

Location: St. John's Fellowship Hall

Session 3: Living Water, Walking Wet



MEETING

Stewardship Committee

8:45am Wednesday, November 6



Property Committee

10am Wednesday, November 6



Fellowship & Hospitality

10:30am Wednesday, November 6



Worship Committee

1:00pm Wednesday, November 6



Church Council

10:45am Sunday, November 10



Endowment Committee

6:30 pm Tuesday, November 12



Altar Guild

6:30pm Tuesday, November 19



Rebekah Circle Meeting

1:00pm Thursday, November 21



HAPPY BIRTHDAY

Kherington Killey	11/01	Karen Mander	11/16
Diane Wold	11/02	Mary Bark	11/21
Rhea Lumsden	11/03	Mark Lee	11/29
Marian Larson	11/04	Patrick Eaton	11/30
Robin Raupp	11/04	Keelee Beal	11/30

H A P P Y

Anniversary

Bob & Darla Fraley	11/06
Daniel & Renee Hallman	11/09

Sunday	Monday	Tuesday	Wednesday	Thursday
<h1>November</h1> <h1>2024</h1>				
3 8:30am Sunday School 8:30am Adult Forum 9:45am Worship Sunday Surprise Social Hour after worship	4	5	6 8:45am Stewardship Mtg. 10:00am Property Mtg. 10:30am Fellowship & Hospitality Mtg. 1:00pm Worship Mtg. 6:30pm Confirmation @ St. John's	
10 8:30am Sunday School 8:30am Adult Forum 9:45am Worship 10:45am Church Council Meeting	11	12 6:30 pm Endowment Committee Meeting	13 6:30pm Confirmation @ St. John's	
17 8:30am Sunday School 8:30am Adult Forum 9:45am Worship 4:30-6:00pm Thanksgiving Community Feast 6:00pm Ecumenical Thanksgiving Service United Church of Sandwich	18 10:00am Reading Buddies	19 <i>LWR Workday</i> <i>9am-3pm</i> <i>7pm-9pm</i> 6:30pm Altar Guild Mtg.	20 <i>LWR Workday</i> <i>9am-3pm</i> 6:30pm Confirmation @ St. John's	
24 8:30am Sunday School 8:30am Adult Forum 9:45am Worship	25	26	27 6:30pm Confirmation @ St. John's	

Thursday	Friday	Saturday
	1	2 5:00pm Worship
7 No Bible Study	8	9 5:00pm Worship 3-N-1 Youth Group Lock-In
14 9:00am Bible Study	15	16 5:00pm Worship
21 9:00am Bible Study 1:00pm Rebekah Circle	22	23 5:00pm Worship
28 	29	30

The Parents Corner

There seems to be more than the season of Spring for weddings this year. Children I knew and their friends are now in their twenties and there is a Wedding Celebration every other week. A wedding followed by a reception is no longer enough. The festivities go on for days if not weeks.

The bride and groom are given advice, of course. A Polish proverb says that a woman should not marry a man until she has seen him drunk. That might stop a few weddings! When I was told that marriage was a 50/50 partnership, my mother disagreed firmly. She said a marriage is a 60/40 partnership and each person must be ready to give 60%. This was very true for me, and more often than not, I received more than I gave. But you don't keep score in a marriage, for you never know what will happen. Life is like that.

My advice? If the love of God as well as each other is the foundation of your marriage, you've got it made.

Submitted by Lois Spizzirri



Church Staff

A. Administration

- i. Office Secretary: Julie Horsch

b. Business

- i. Financial Recorder: Mike Hamer
- ii. Treasurer: Scott Horsch

c. Facilities

- i. Building Superintendent: Diane Wold

d. Worship

- i. Accompanists: Jessica Ortega, Toni Lundeen, Becky Stephens, Margaret Page

Church Council

President: Wayne Karp
Vice-President:
Secretary: Bob Fraley

Congregation Council

Andrew (Drew) Hallman
Michael Hamer
Connie Hamer
Cindy Karp
Jeanette Pfeifer

Lutherdale Bible Camp Representatives-2024

Karol Grandgeorge, Nancy Miller

Synod Assembly Representatives-2024

Pastor, Lynn Skrzypiec

Cemetery Ministry Team

Bob Fraley, Glen Reuter, Doug Stahl

Endowment Ministry Team

Mike Hamer, Wendy Merkel, Jeanette Pfeifer, Dale Robinson

Finance Ministry Team

Chuck Hoepe,

Bob Mueller, Joanne Robinson

Memorial and Other Gifts Fund Team

Kathy Anderson, Connie Hamer,

Nancy Miller, Lynn Skrzypiec

Church Ministries & Organizations Contacts

Altar Guild

CROP Walk: Mark Lee & Mike Hamer

Growing Hope: Jerry & Toni Lundeen

Global Missions: *In need of leadership*

Habitat for Humanity: Karol Grandgeorge

Hearts & Hands: Stella Gardner

House of the Little Ones: Linda Johnson

LSSI Christmas Hope Chest: Karol Grandgeorge & Julie Horsch

LWR Projects (Mission Quilts, Baby Care Kits, School Kits,

Personal Care Kits, Sewing Kits): Karol Grandgeorge

Meals on Wheels: Mark Lee

Midwest Shelter for Homeless Veterans: *In need of leadership*

Our Sharing Pantry: Chuck Lee

Partners In Mission - Uganda, Africa: *In need of leadership*

Prayer Chain: Karol Grandgeorge,

Parish Education

Confirmation

- a. Primary Instructor—Pastor Chris & Scott Horsch
- b. St. John's Congregational Council

3N1: 7—12 gr. Youth Ministry:

Coordinators: Jason & Kim Boczko

from Salem Lutheran Church, Sandwich

Youth Ministry Connection from St. John's—Julie Horsch

Esther Circle: Jeanette Pfeifer

Rebekah Circle: Connie Hamer

Sunday School Coordinator: Nancy Miller

Chairpersons/Ministry Summaries

(Listed alphabetically by ministry)

Cemetery Ministry: Doug Stahl

Oversees the care of the church cemetery, maintenance and improvements.

Communications Ministry: Bob Fraley

Seeks to improve communication with members and the community.

Fellowship & Hospitality Ministry

Plans activities and recreational outings to promote friendship and fellowship in our congregation and community.

Finance Ministry: Scott Horsch

Proposes the budget and administers incoming and outgoing funds.

Outreach Ministry: Jeanette Pfeifer

Reach out to the community by welcoming new neighbors with bread, hosting/participating in community events, following up with visitors, and bringing God's love to St John's 'special members' from cradle roll through the homebound.

Parish Education Ministry:

Oversees Sunday School Program, Summer Bible Day Camp, and youth related activities.

Property Ministry: Drew Hallman

Oversees the care of the church facilities and grounds, maintenance and improvements.

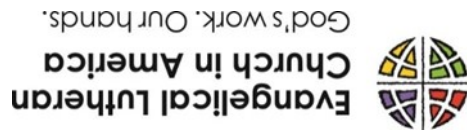
Stewardship /Missions Ministry: Lynn Skrzypiec

Provides opportunities for members of our congregation to use their gifts and resources, which includes raising funds for special projects. Provides a variety of opportunities to do God's Work with Our Hands. Organizes activities, publicize events and coordinate participation. Please join us in any way that works for you.

Worship Ministry: Cindy Karp

Striving to provide Spirit filled worship opportunities in an atmosphere of hospitality.

Newsletter of St. John's Lutheran Church
November 2024



We're on the Web:
www.elcastjohns.com

235 South Green Street
P.O. Box 245
Somonauk, Illinois 60552

Church Office 815-498-3667
office@elcastjohns.org

Follow and like us on Facebook

*[www.facebook.com/stjohnslutheran
churchsomonauk/](http://www.facebook.com/stjohnslutheranchurchsomonauk/)*