



## January Journal, 2023

ST. JOHN'S LUTHERAN  
CHURCH  
235 S GREEN ST  
SOMONAUK, IL 60552  
815.498.3667

### *A New Year's Message from Your Pastor..*

*"For surely I know the plans I have for you, says the Lord,  
plans for your welfare and not for harm,  
to give you a future with hope." ... Jeremiah 29:11 (NRSV)*

The New Year has arrived! I do hope all of you had a wonderful and Merry Christmas! Don't you wonder what God may have in store for us this year?

Have you made your New Year's resolutions for 2023? I would like to add something to that list for your consideration ... please consider coming to Bible study and Bible reading to your list of resolutions. There are multiple ways in which you could keep in touch with and be touched by God.

In January, our Annual Meeting will take place on January 22<sup>nd</sup>. Come to this important meeting as we discuss what God has been doing in this place.

In the coming year, our Council and committees will continue with their respective responsibilities of sharing the Good News of Jesus Christ through activities and projects; our Bible Studies will continue Sunday & Thursday mornings, Sunday School will gather, and Confirmation classes will continue to meet. Ash Wednesday, Lent and Easter will soon be here. I look forward to our shared ministry in the New Year!

On a personal note, thank-you for all the cards, gifts and well wishes Steve & I received at Christmastime and for the New Year! We are so blessed to be here! Thank-you!!!

*God's Blessings & Peace,  
Pastor Chris Schoon*



**Annual Meeting**  
Sunday January 22nd  
Following 9:45am Worship

Office will be  
closed on Monday  
January 2nd.

#### **Regular Office Hours**

Monday-Thursday  
8:00am - 4:00pm

Fridays  
8:00am-12:00pm

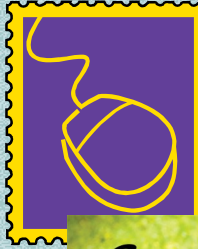
Email:  
office@elcastjohns.org

Phone:  
815.498.3667

Happy  
New Year!

... look, new things  
have come into being!  
2 Corinthians 5:17, NRSV

Do we have your  
e-mail address?



Sat Feb 11th  
After 5pm worship  
See Page 6  
for more details



## Stewardship/Mission minutes December 7, 2022

The annual Stewardship report was submitted to the church office before Dec. 1<sup>st</sup>.

A very, very, sincere thank you to Wayne and Cindy Karp who not only did their own assigned Meals-on-Wheels week, but covered Mark's when he was ill and also have helped out on other weeks that other groups could not cover.

The November offering report was General Offering - \$16,027.06; Capital Fund - \$1,299.79; Good Samaritan Fund - \$150; LSSI Giving Tree - \$361.41 + \$500 (Endowment); MSHV - \$50; and Baby Care Kits - \$20.

The flyers for the Lake Holiday newspaper were delivered to the: Lake Holiday Property Office (815)498-2216); 283 Easy Street on Nov. 17<sup>th</sup> and the cost was \$130, covered by the Hamers. The cost will increase to \$150 next year. We will begin planning for the Easter flyer in January and will use Stewardship fund #419 to cover the cost. A heartfelt thanks to Becky W., St. John's secretary, for designing the flyer and for adding it to our weekly worship folder and monthly newsletter.

Karol will check with the village to see if there will be a Springfest this year. Karol will also write the article for the January emphasis which is Kamwemge Secondary School in Uganda.

March 4<sup>th</sup> will be the Tacos 'n Trivia event.

Lyn received a thank you from NI Food Bank for our services. Karol reported that no dates were available for our confirmands to work at Feed My Starving Children over their winter break, but she will follow-up for their spring break.

Our next scheduled meeting is on January 4<sup>th</sup>, 2023!

**Endowment Committee Meeting**  
November 15, 2022

Money for distribution:		
Balance from August 23,2022		\$4,342.05
Correction		(2,744.71)
Corrected Balance		1,597.34
4 <sup>th</sup> • Quarter deposit from Fund A		\$11,110.87
<b>Total for distribution</b>		<b>\$12,708.21</b>
Crop Walk (Check made in October	\$1,000	
LWR Shipping	\$1,000	
House of Little Ones	\$1,000	
Sharing Pantry	\$1,000	
Open Door	\$1,000	
Hope Haven	\$1,000	
Meals on Wheels	\$1,000	
Feed Starving Children	\$1,000	
Safe Passage	\$1,000	
Growing Hope Globally	\$1,000	
We Care, Pregnancies	\$ 500	
Giving Tree	\$ 500	
<b>Total Disbursements</b>	<b>\$11,000</b>	
Balance 11/15,2022		<b>\$1,708.21</b>

**March 20, 2023**  
**Spring is here!!**



**“I tell you  
the truth,  
if anyone keeps  
my word,  
he will never  
see death.”**

JOHN 8:51, NIV

Meeting adjourned praying the Lord’s Prayer

Respectfully submitted,

Jeanette Pfeifer, Secretary

## Partners in Mission



Kamwenge Secondary and Vocational School (KSVS)  
Good Shepherd Kindergarten and Primary School (GSK)  
Kamwenge, Uganda



### Special Offering in January for Partners in Mission

Partners in Mission is our church's connection to Good Shephard Kindergarten and Primary School and Kamwenge Secondary and Vocational School often referred to as KSVS in the southwestern region of Uganda, Africa. Pastor John, their leader, has been here to visit several times and is expressing his thanks for our continued support. Many of the students live at the school because of home circumstances and the distance to travel. These students need to have their tuition paid. It takes \$40 a month to sponsor a child or \$480 a year. Since it was started in 2006, they have built classrooms including a primary school, brought electricity to the entire campus, build a STEM center for learning, dug a modern well for safe drinking water, and built housing for teachers and students. They are in need of replacing the carpentry shop with a building that would house both the carpentry shop and the welding shop. With so many needs, any amount that can be given is welcomed. They thank us for our continued support and prayers over the past years.



**Visit our website:** [PIM-Africa.org](http://PIM-Africa.org)

**Email:** [info@PIM-Africa.org](mailto:info@PIM-Africa.org) **Phone:** 630-913-0268

**Contact us:** Barbara Retelny (President US board)  
c/o Partners in Mission  
PO Box 441  
Glen Ellyn, IL 60138

You, our partners, have helped us complete some major building projects to upgrade facilities at the school.

*Thank you for being a part of the larger KSVS Story!*

- 2012**     **2012 Clean Water** – Northern Illinois and Mbarara (Uganda) Rotary Clubs partnered to install a well and power pump for the campus.
- 2014**     **2014 Kitchen and Dining Hall** – 1st Annual “Bike to the Lake” raised \$110,000 to build a state-of-the-art training kitchen and dining hall.
- 2017**     **2017 Electricity** – Giving to our 2016 Christmas appeal topped \$28,000. Matching funds from a generous donor allowed us to install electricity for the entire campus.
- 2018**     **2018 STEM Center** – From 2015–2018 we raised \$400,000 to construct a new STEM Center through contributions and matching fund from many donors and the annual “Bike to the Lake” fundraising events.
- 2019**     **2019 Computer Technology on Campus** – Technology including a Wi-Fi connection and 100 computers are now available to students and teachers.
- 2020**     **2020 Girl’s Dorm** – The 3rd Girls’ Dorm with new indoor plumbing access for all girls’ dorms offers girls privacy and safety on campus. We thank donors and riders in the 2019 “Bike to the Lake” who made this building possible.
- 2022**     **2022 New Land** – A donor helped KSVS acquire 25 acres of land to be used as a demonstration farm. Another 40 acres was acquired at a cost of ½ its full value. The long-range plan is to build modern vocational classes on this property.

# 2023 Upcoming Events

## January 1

Happy New Year's Day

4

Confirmation Classes resume and will be at Salem for the month of January.

6

Epiphany of our Lord

8

Baptism of Our Lord

16

Martin Luther King, Jr. Day

## February 2

Groundhog Day

11

Chili Cookoff

14

Valentine's Day

19

Transfiguration Sunday

20

President's Day

22

Ash Wednesday

26

First Sunday of Lent

## April 9

Easter Sunday

## January Birthdays and Anniversaries

### Birthdays

Doug Stahl	01/02
Becky Wollenweber	01/02
Charles Hoepe	01/03
Kyle Reuter	01/03
Stephen Kossak	01/03
Alexander Shoener	01/03
Neil Miller	01/07
Addyson Barnes	01/07
Martha Johnson	01/11
Dale Robinson	01/14
Erin Killey	01/19

Caitlyn Merkel	01/21
Marilyn Abbott	01/24
Crystal Pyle	01/25
Keith Larson	01/27
Nancy Gletty-Olson	01/27
Steven Vermeland	01/27
Vanessa Pyle	01/30

### Anniversaries

Michael & Nancy Maroscia	01/06/1984
Lee & Gerry Gehrke	01/24/1970

SOME HISTORICAL NAMES FOR JANUARY INCLUDE "WULFMONATH," WHICH CAME FROM THE ANGLO-SAXONS BECAUSE IT WAS THE MONTH HUNGRY WOLVES WOULD COME SCAVENGING. KING CHARLEMAGNE WOULD CALL IT "WINTERMANOTH" MEANING "WINTER/COLD MONTH.

A Special Event by St. John's Hospitality & Fellowship Committee..

# The Return of the **CHILI COOK-OFF!**

**SATURDAY, FEBRUARY 11 AT 6:00 PM  
IN THE FELLOWSHIP CENTER**

Bring a crock-pot of your famous chili to  
enter in the contest  
*(Prizes will be awarded)*

**OR**

Sign up to bring a salad, dessert, cornbread  
or chili toppings.



## **BUT WAIT! THERE IS MORE!!!**

**St. John's TALENT SHOW will be after the judging.**

Can you sing, dance, paint, stand on your head, play an instrument, or show a project you made? The possibilities are endless. Share your amazing talent with us. Solo and group performances are acceptable. All ages are encouraged to participate.

**Sign up sheets will be in the WELCOME CENTER beginning in January.**

## **January Fun Facts**

The name for January comes from the Roman god, Janus, who is always depicted with two heads. He uses one head to look back on the year before, and the other head to look forward into the New Year!

One of the most influential events in the U.S. happened on January 1, 1892, Ellis Island opened, allowing for the immigration of over 20 million people!

Originally, the Roman calendar had only 10 months, and it excluded January and February.

January was a monumental year for Alaska! As of January 3, 1959, Alaska officially became the 49<sup>th</sup> state of the United States.

January has two zodiac signs Capricorn, which is until January 19, and Aquarius, which is for the rest of the month.



**Don't Forget  
Your Tithe**



## LWR (LUTHERAN WORLD RELIEF) WORK DAYS

**JANUARY 17th 9:00am to 3:00pm and 7:00pm-9:00pm Bring your lunch.**  
**JANUARY 18th 9:00 am to 3:00pm Bring your lunch**

Lutheran World Relief has partners of all kinds all over the world. In Mali LWR's longtime partner is the National Solidarity Fund, which has far-reaching access throughout Mali. This enables the love of Christ to be cast far and wide through distributions of LWR quilts and kits. Some 150,000 people in women's organizations, farmer and artisan cooperatives, schools, health centers, support groups for people with disabilities and social service organizations in some of Mali's most remote areas received quilts, personal care kits, school kits, baby care kits and fabric kits. This is a recap of an article from a LWR newsletter. As you can see, it takes a great many items in just one small country. Our love reached 361,225 neighbors in 19 countries in need in 2021.

Please put the 17<sup>th</sup> and 18<sup>th</sup> of January on your calendar to come help at LWR Work Days. We will be cutting blocks and school bags, tying quilts, ironing material and sewing around quilts. Many hands make light work remember! We usually have some kind of treats and coffee is always available to be made. Let's make 2023 a record year. God's Work, Our Hands.



Sunday School  
Christmas Program

Sunday, Dec 18th

Thank you parents,  
teachers, and  
helpers for making  
the Christmas  
Program a huge  
success!



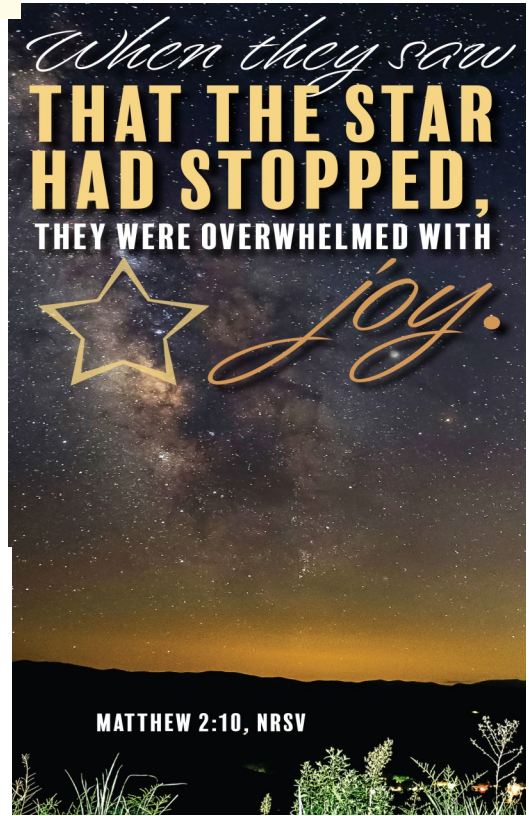
*If you have not done so already,  
Please submit Annual Reports  
by the end of the month.*



*Rebekah Circle Meeting*  
Date: Thurs, Jan. 19, 2023  
Time: 1:00p.m.  
Location: St. John's  
Lesson #12, Days 3 & 4



**Thursday Morning  
Bible Study**  
9am-10am



**Baptism of our lord  
January 8th**



**"THAT'S A NICE THOUGHT, SISTER IDA,  
BUT I'M NOT SURE IT'S BIBLICAL TO INCLUDE A  
COUPON 'GOOD FOR \$5.00 OFF YOUR NEXT TITHE'  
IN OUR NEWSLETTER"**

10/3/22	Dividend Payment			\$131.89	\$68,790.57
10/3/22	Dividend Payment			\$37.87	\$68,828.44
10/3/22	Dividend Payment			\$116.14	\$68,944.58
10/3/22	Dividend Payment			\$28.89	\$68,973.47
10/3/22	Dividend Payment			\$79.48	\$69,052.95
10/4/22	Dividend Payment			\$371.53	\$69,424.48
10/7/22	Resource Service Fee		\$280.36		\$69,144.12
11/1/22	Dividend Payment			\$168.34	\$69,312.46
11/1/22	Dividend Payment			\$81.13	\$69,393.59
11/1/22	Dividend Payment			\$32.91	\$69,426.50
11/1/22	Dividend Payment			\$371.54	\$69,798.04
11/2/22	Dividend Payment			\$40.36	\$69,838.40
11/7/22	Resource Service Fee		\$291.78		\$69,546.62
11/18/22	Long Term Capital Gain			\$6,056.89	\$75,603.51
12/1/22	Dividend Payment			\$206.99	\$75,810.50
12/1/22	Dividend Payment			\$371.54	\$76,182.04
12/1/22	Dividend Payment			\$39.32	\$76,221.36
12/1/22	Dividend Payment			\$41.89	\$76,263.25
12/2/22	Dividend Payment			\$91.04	\$76,354.29
12/7/22	Resource Service Fee		\$304.74		\$76,049.55
12/7/22	Long Term Capital Gain			\$5,821.95	\$81,871.50
12/7/22	Dividend Payment			\$219.86	\$82,091.36
12/9/22	Long Term Capital Gain			\$2,648.19	\$84,739.55

Ticker	CUSIP	Description	Quantity	Cost	Market Valu	Unrealized G/L
NFFFX	649280823	AMERICAN FUNDS NEW WORLD F-2	167.778	\$10,000.00	\$11,145.49	\$1,145.49
KAUIX	31421N873	FEDERATED HERMES KAUFMANN IS	1656.188	\$11,000.00	\$8,165.01	-\$2,834.99
KLCIX	314172412	FEDERATED HERMES KAUFMANN LARGE CAP	1100.649	\$27,500.00	\$22,001.97	-\$5,498.03
FKAIX	31421N402	FEDERATED HERMES KAUFMANN SMALL CAP	229.789	\$11,000.00	\$9,648.84	-\$1,351.16
FTRBX	31428Q101	FEDERATED HERMES TOTAL RETURN BOND F	3215.221	\$36,400.00	\$31,219.80	-\$5,180.20
FULIX	31428Q747	FEDERATED HERMES ULTRASHORT BOND FUI	2225.961	\$20,000.00	\$19,944.61	-\$55.39
FRGXX	31607A703	FIDELITY GOVERNMENT PORTFOLIO INSTL	84739.55	\$84,739.55	\$84,739.55	\$0.00
LLDYX	543916688	LORD ABBETT SHORT DURATION INCOME I	3157.895	\$13,200.00	\$12,157.90	-\$1,042.10
MINIX	55273E822	MFS INTERNATIONAL INTRINSIC VALUE I	542.24	\$24,000.00	\$20,713.57	-\$3,286.43
PRBLX	701769101	PARNASSUS EQUITY INCOME	1339.517	\$57,500.00	\$63,533.29	\$6,033.29
PIMIX	72201F490	PIMCO INCOME INSTL	6755.321	\$78,300.00	\$71,606.40	-\$6,693.60
VEIRX	921921300	VANGUARD EQUITY INCOME ADM	815.569	\$56,152.00	\$73,776.37	\$17,624.37
VIMAX	922908645	VANGUARD MID CAP INDEX ADM	46.06	\$10,000.00	\$11,845.25	\$1,845.25
VWUSX	921910105	VANGUARD US GROWTH FUND 23	212.314	\$10,000.00	\$8,575.36	-\$1,424.64
		TOTAL FOR ALL ASSETS		\$449,822.02	\$449,103.88	-\$718.14
		Money Market				
		Designated funds inside of Money Market				
		Audio/Visual		\$100.00		
		Parsonage		\$3,666.00		
		Pew Fund		\$1,515.28		
		Unspecified Memorials		\$1,265.00		

**THE LORD HIMSELF GOES BEFORE YOU**

**AND WILL BE WITH YOU;**

**HE WILL NEVER LEAVE YOU NOR FORSAKE YOU.**

**DO NOT BE AFRAID; DO NOT BE DISCOURAGED.**

**DEUTERONOMY 31:8, NIV**



# Epiphany

## Parents's Corner

On January 6<sup>th</sup>, we enter the season of Epiphany. It brings the revelation that Jesus is a gift for all the people of the world, not only the Jews. It begins with the report of wise men from far away following a bright star to bring gifts to a foretold king of the Jews. It can be part of the Christmas pageant that little children portray wearing robes and crowns and carrying gifts to the baby.

Young children will understand the giving and receiving of gifts and a search for a special child. But for older children, there is more to the tale to explore.

The times were dangerous for strangers. Travel was difficult and often fatal. Why did they risk the journey? What compelled them?

There were unexpected happenings. The Magi looked for a king in the palace and were referred, instead, to the humble surroundings of a tiny town. But while they were in that palace, they met King Herod and his people and found them untrustworthy. They were wary enough to warn Joseph of danger to the child. (The Magi did not return to Herod with requested information of Jesus' whereabouts.)

When an angel added urgency to that warning, Joseph fled to Egypt with Mary and Jesus. The Magi's gifts of gold, frankincense and myrrh could handily help fund that hasty escape. Herod was not able to kill baby Jesus.

Was the visit of the wise men happenstance? Or was it another multi-faceted plan from the One who is an "ever-present help in time of trouble?"

*Submitted by Lois Spizzirri*



# Be the change you wish to see in the world.

Mahatma Gandhi

## Be Kind

Do one kind thing for someone else every day. It may be as small as holding a door open with a smile, or maybe you splurge and buy some food to donate to your local food bank. Whatever it is, do it with your heart full.

- Pay for the person behind you (toll, coffee, fast food, ...)
- Write a letter to someone
- Put a coin in an expired meter
- Every time you buy a new clothing item, donate something
- Send flowers to someone
- While driving, let someone out/merge into your lane
- Offer to babysit
- Bake some healthy treats to bring in to work
- Volunteer
- Leave an extra generous tip
- Compliment a stranger
- Donate food to a food bank
- See what donations are needed at your local pet or women's shelters
- Invite someone over for dinner
- Treat a friend to the movies or coffee
- Donate blood
- Create motivational quote cards to leave in places
- Sign up for a charity 5k
- Ask for donations to your favorite charity instead of birthday/ anniversary gifts
- Text someone a motivational quote, funny joke, anything to show you are thinking of them
- Call your parents and tell them you love them
- Offer to walk someone's dog or help with yard work – bonus: great exercise!

Always  
be kinder  
than  
you feel.

Every day  
is a new beginning.  
Take a deep breath,  
smile and start  
again.

Help people,  
even when you  
know they can't  
help you back.

do what  
makes your  
soul shine

I've seen better days, but  
I've also seen worse. I  
don't have everything that  
I want, but I do have all I  
need. I woke up with some  
aches and pains, but I  
woke up. My life may not  
be perfect, but I am  
blessed.

Selffa.com

"Don't look  
down on  
somebody  
unless you  
are helping  
them up."

Be  
your  
self

[www.facebook.com/beyourself09](http://www.facebook.com/beyourself09)

# January 2023

Sunday	Monday	Tuesday	Wednesday	Thursday	Friday	Saturday
<b>1</b> 8:30am Sunday School 8:30am Adult Forum 9:45am Worship Service <b>New Year's Day</b> <b>Noisy Coin Collection</b>	<b>2</b> Office Closed in observance of New Years	<b>3</b> 11:30am Ministerial Fund Meeting 12:00pm Pastor Text Study 7:00pm MOG Meeting (as of 10-4-22)	<b>4</b> 8:45am Stewardship & Missions Meeting 6:30pm - 8:00pm Confirmation Classes resume and will be Salem LC for the month of January	<b>5</b> 8:30am - 10:30am Our Sharing Pantry 9:00am - 10:00am Thursday Morning Bible Studies	<b>6</b> <b>Epiphany</b>	<b>7</b> 5:00pm Worship Service
<b>8</b> 8:30am Sunday School 8:30am Adult Forum 9:45am Worship Service	<b>9</b> 9:00am NI Foodbank Delivery	<b>10</b> 12:00pm Pastor Text Study 7:00pm IT Committee Meeting	<b>11</b> 6:30pm - 8:00pm Confirmation Classes at Salem LC	<b>12</b> 8:30am - 10:30am Our Sharing Pantry 9:00am - 10:00am Thursday Morning Bible Studies 6:30pm Church Council Meeting	<b>13</b>	<b>14</b> 5:00pm Worship Service
<b>15</b> 8:30am Sunday School 8:30am Adult Forum 9:45am Worship Service	<b>16</b> <b>Martin L. King, Jr. Day</b> 4:00pm - 6:00pm PM Food Pantry	<b>17</b> 12:00pm Pastor Text Study	<b>18</b> 6:30pm - 8:00pm Confirmation Classes at Salem LC	<b>19</b> 8:30am - 10:30am Our Sharing Pantry 9:00am - 10:00am Thursday Morning Bible Studies 1:00pm Rebekah Circle Meeting-St John's	<b>20</b>	<b>21</b> 5:00pm Worship Service
<b>22</b> 8:30am Sunday School 8:30am Adult Forum 9:45am Sunday Worship <b>IMPORTANT - ANNUAL MEETING AFTER WORSHIP</b>	<b>23</b>	<b>24</b> 12:00pm Pastor Text Study	<b>25</b> 6:30pm - 8:00pm Confirmation Classes at Salem LC	<b>26</b> 8:30am - 10:30am Our Sharing Pantry 9:00am - 10:00am Thursday Morning Bible Studies	<b>27</b>	<b>28</b> 5:00pm Worship Service
<b>29</b> 8:30am Sunday School 8:30am Adult Forum 9:45am Worship Service	<b>30</b>	<b>31</b> 12:00pm Pastor Text Study	<b>1</b> 8:45am Stewardship & Missions Meeting 6:30pm - 8:00pm Confirmation Classes at St. John's	<b>2</b> 8:30am - 10:30am Our Sharing Pantry <b>Groundhog Day</b> 9:00am - 10:00am Thursday Morning Bible Studies	<b>3</b>	<b>4</b> 5:00pm Worship Service

**Church Staff****Pastor Christine Schoon****Administration**

Office Secretary: Becky Wollenweber  
Diane Wold  
Office hours: Monday-Thursday  
8am-4pm  
Fridays 8am-12pm

**Business**

Financial Recorder: Mike Hamer  
Treasurer: Dave McKenzie

**Facilities**

Building Superintendent: Diane Wold

**Worship**

Accompanists: Toni Lundeen  
Becky Stephens, Margaret Page,  
Jessica Ortega

**Church Council**

President: Scott Horsch  
Vice-President: Wayne Karp  
Secretary: Erik Wold

**Congregation Council**

Jim Beal  
Andrew (Drew) Hallman  
Michael Hamer  
Cheryl Hearn  
Jeanette Pfeifer  
Lynn Skrzypiec

**Lutherdale Bible Camp Representatives**

Karol Grandgeorge, Nancy Miller

**NI Synod Assembly Delegates 2022**

Pastor Chris Schoon, Lynn Skrzypiec, Wayne Karp

**Ministries****Cemetery Ministry Team**-Doug Stahl

Bob Fraley, Glen Reuter  
Oversees the care of the church cemetery, maintenance and improvements.

**Communications Ministry**-Linda Johnson

Seeks to improve communication with members and the community.

**Finance Ministry Team**-Wayne Karp

Chuck Hoepe, Bob Mueller, Joanne Robinson,  
Proposes the budget and administers incoming and outgoing funds.

**Fellowship & Hospitality Ministry Team**

Cheryl Hearn Marilyn Abbott, Lee McKenzie,  
Ellie Kulton, Mary Carlson  
Plans activities and recreational outings to promote friendship and fellowship in our congregation and community.

**Memorial and Other Gifts Fund Team**

Kathy Anderson, Anita Milligan, Nancy Miller, Connie Hamer Lynn Skrzypiec

**Missions Endowment Ministry Team**

Ward Hearn Mike Hamer, Jeanette Pfeifer, Linda Johnson, Dale Robinson

**Missions Stewardship Ministry Team**

Lynn Skrzypiec Mike Hamer, Connie Hamer, Mark Lee, Karol Grandgeorge

Provides opportunities for members of our congregation to use their gifts and resources, which includes raising funds for special projects. Provides a variety of opportunities to do God's Work with Our Hands. Organizes activities, publicize events and coordinate participation. Please join us in any way that works for you.

**Outreach Ministry** Jeanette Pfeifer, Ben Beal

Reach out to the community by welcoming new neighbors with bread, hosting/participating in community events, following up with visitors, and bringing God's love to St John's 'special members' from cradle roll through the homebound.

**Parish Education Team**

Jim Beal Nancy Miller, Wendy Merkel, Ellie Kulton, Emily Denault

Oversees Sunday School Program, Summer Bible Day Camp, and youth related activities.

**Confirmation**

Primary Instructor—Pastor Chris & Scott Horsch  
St. John's Congregational Council

**Sunday School Coordinator**-Nancy Miller**Property Ministry Team**

Drew Hallman Ward Hearn, Dale Robinson, Steve Schoon.

Oversees the care of the church facilities and grounds, maintenance and improvements.

**Worship Ministry Team**

Lois Spizzirri Toni Lundeen, Linda Johnson

Striving to provide Spirit filled worship opportunities in an atmosphere of hospitality.

**3N1: 7—12 gr. Youth Ministry:**

Coordinators: Jason & Kim Boczeko Salem LC  
Youth Ministry Connection from St. John's—Julie Horsch

**Esther Circle**-Jeanette Pfeifer

**Rebekah Circle**-Connie Hamer

**Church Ministries & Organizations****Contacts**

Altar Guild  
CROP Walk: Jeanette Pfeifer  
Growing Hope: Jerry & Toni Lundeen  
Global Missions:  
Habitat for Humanity: Karol Grandgeorge  
Hearts & Hands: Stella Gardner  
House of the Little Ones: Linda Johnson  
LSSI Christmas Hope Chest: Heidi Eaton  
LWR Projects (Mission Quilts, Baby Care Kits, School Kits,  
Personal Care Kits, Sewing Kits): Karol Grandgeorge  
Meals on Wheels: Mark Lee  
Midwest Shelter for Homeless Veterans:  
Our Sharing Pantry: Doris Miller  
Partners In Mission - Uganda, Africa:  
Prayer Chain: Karol Grandgeorge  
Wedding Coordinator: Diane Wold


The use of the ELCA name, emblem and tagline are limited to the ELCA churchwide organization. ELCA synods and ELCA congregations. Other entities may use these only with the agreement and written permission of the ELCA. ELCA is a registered service mark ® of the Evangelical Lutheran Church in America (U.S. Patent and Trademark Registration No. 2,906,015).



# January Journal 2023



Evangelical Lutheran Church in America  
God's work. Our hands.

**WORSHIP**  
*with us*

Worship Times  
Saturday: 5:00pm  
Sunday: 9:45am

St. John's Lutheran Church 235 South Green Street Somonauk, ILL 60552

PHONE 815-498-3667 EMAIL: [office@elcastjohns.org](mailto:office@elcastjohns.org)  
WEBSITE: [www.elcastjohns.org](http://www.elcastjohns.org)

[www.facebook.com/stjohnslutheranchurchsomonauk/](https://www.facebook.com/stjohnslutheranchurchsomonauk/)

FAMILY & FRIENDS ALL WELCOME